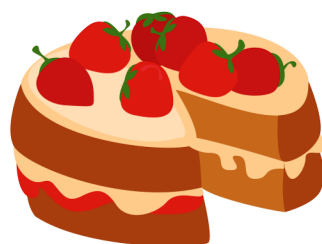


Ffynhonnau Byw

TAFLEN SYNIADAU



**Bore coffi / Noson
Goffi**



Te Prynhawn



**Swper cylch i
wahoddedigion**



Noswaith cyrri a chwis



Bar-by-ciw



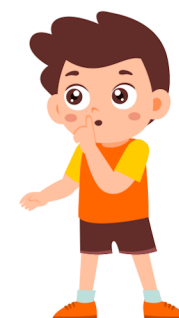
Taith gerdded natur



**Taith i ymweld â
ffynhonnau lleol**



**Sesiynau seiclo
noddedig**



**Distawrwydd wedi'i
noddi**



**Casgliad eglwys
arbennig bob mis**



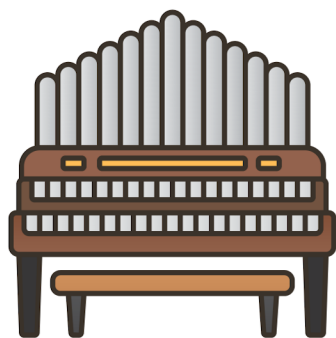
Helfa drysor



Gwerthu teisennau

Ffynhonnau Byw

TAFLEN SYNIADAU 2



Organathon



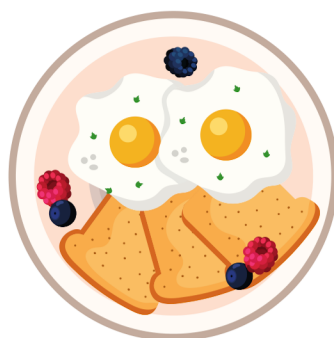
Darlith ar bwnc penodol



Ocsiwn addunedau



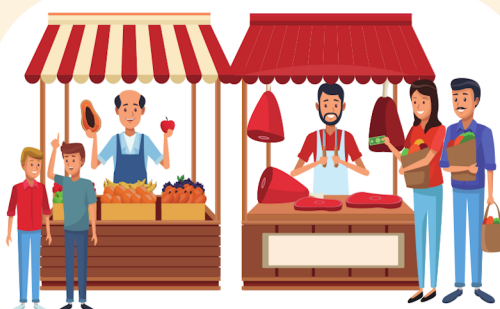
Golchi ceir



Brecwast mawr



Cymanfa ganu



**Fiesta (ffair)
aeaf/wanwyn/haf/
Nadolig**



Noson gwis



Clwb cynilo



Noson salsa